

# Room Hire RATE CARD 2025



## HINEMOA

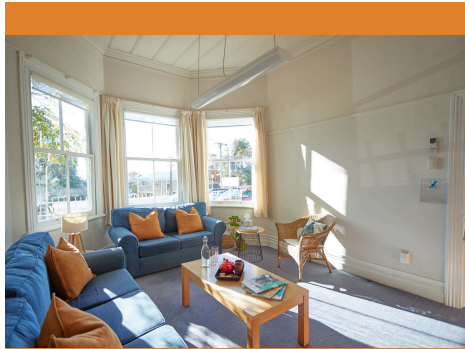
### STANDARD HIRE

\$24 per hour

### COMMUNITY HIRE

\$16 per hour

*Largest room, 16 boardroom style, 40 standing*



## MARITIME

### STANDARD RATE

\$18 per hour

### COMMUNITY RATE

\$12 per hour

*Casual meetings & popular for counselling*



## MOKOIA

### STANDARD RATE

\$18 per hour

### COMMUNITY RATE

\$12 per hour

*Group meetings, training sessions, courtyard area!*

**FULL HOUSE HIRE RATE \$55 per hour (\$37 Community rate)**

All rooms include FREE WIFI access, filtered water, tea and coffee making supplies and heat pump/air conditioning. White board available in all rooms. Hinemoa and Mokoia have trestle tables and stackable chairs. Maritime has 3 & 2 seater couches plus additional chairs and coffee tables. Shared kitchen and bathrooms available to all.

*More details available online!*



**SMART TV/VIDEO CONFERENCING EQUIPMENT  
AND PROJECTOR/SCREEN AVAILABLE**

**Check room availability online!**

**PLEASE NOTE:**

All rate card prices are GST exclusive.

**Community rate** applies to all bookings that are for registered non profit or charity organisations. Management approval required to approve community discounted rates.



highburyhouse.org.nz



admin@highburyhouse.org.nz



09 480 5279